

Instructions to connect and use SPSS on server Tesla

Date 2022-09-14 version 2.4

To use SPSS you will need a file that we will provide and a program installed if using an apple product.

The server you will be using is called **Tesla.ekonomikum.uu.se**. Step 1 Get the file

Go to website <https://www.ekonomikum.uu.se/besok-ekonomikum/reception-och-service/fjarrskrivbord-ekonomikum/>

Anslut till fjärrskrivbord på Ekonomikum

För att kunna koppla upp dig via fjärrskrivbord (Remote Desktop) mot någon av våra datorer vid Ekonomikum Uppsala så måste du koppla upp dig via vår gateway.

Välj anslutning

Du väljer vilken server du vill koppla upp dig mot. Anställda som har tillstånd att koppla upp sig mot sin egen dator vid Ekonomikum Uppsala kan istället ange adressen till denna.

Klicka på en av länkarna nedan för att ladda ned en .rdp-fil. Filen sparar du på lämplig plats på datorn och använder dig av varje gång du ska koppla upp dig mot servern eller din egen dator. Enklast är att dubbelklicka på filen.

Download file for
Tesla

För att koppla upp dig mot din egen dator anger du [ts.im.uu.se](#)

- [ts.im.uu.se](#) - Studenter på Informatik och media
- [ts.statistik.uu.se](#) - Studenter på Statistiska institutionen
- [ts.nek.uu.se](#) - Studenter på Nationella ekonomiska institutionen
- [tesla.ekonomikum.uu.se](#) - Studenter på Ekonomikum
- [gis.ekonomikum.uu.se](#) - Studenter på Kulturgeografi
- [mind.kultgeog.uu.se](#) - Anställda på Kulturgeografi
- [ts.ekonomikum.uu.se](#) - Anställda på Ekonomikum (Tidigare obs-ts)
- [Koppla upp sig mot egen dator](#)

Download the file.

1. Place the file on your desktop or any other place so you can find it again.
2. Double-click the file.
3. There will be questions about "The publisher of this connection can't be verified. Do you want to connect anyway".
Connect anyway.
4. You will be asked for credentials
Your username should be there already; *username@user.uu.se* , type in your password A


Windows version

Windows Security

Enter your credentials

These credentials will be used to connect to the following computers:

1. rd.ekonomikum.uu.se (RD Gateway server)
2. tesla.ekonomikum.uu.se (remote computer)



Domain: user.uu.se

☐ Remember my credentials

Username **Password**

OK Cancel

It will look like this on a mac.



On a mac you will need to have an app called Microsoft Remote Desktop downloaded and installed. You can get it with the link below or in the appstore.

Note that You will have to have **macOS 10.14** or later

<https://apps.apple.com/se/app/microsoft-remote-desktop-10/id1295203466?mt=12>

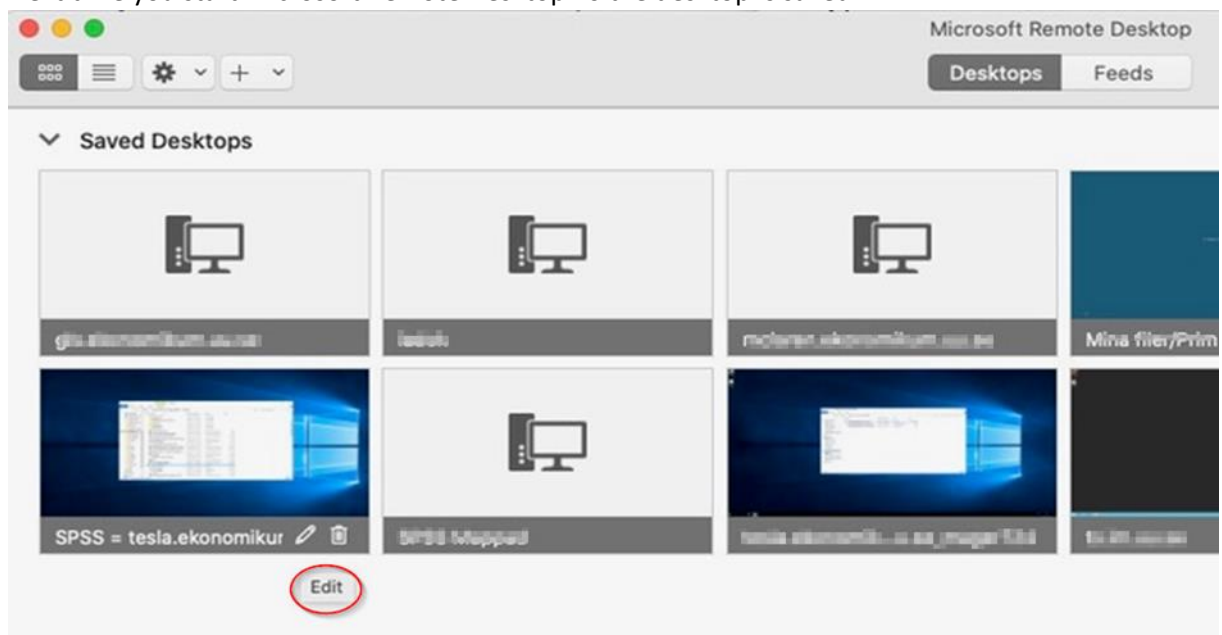


To Save and use files in SPSS

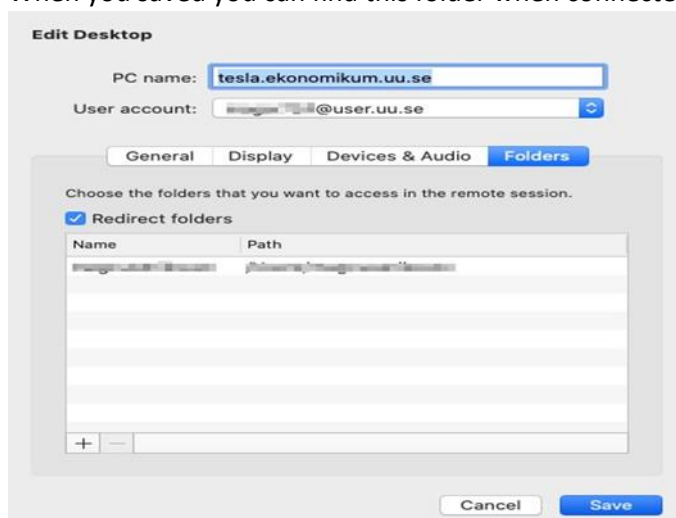
MAC

To save and open files that is located on your MAC do the following;

- One way is to edit the saved desktop and add a folder from your computer so that you can use it when logged in to Tesla-server.
- Start Microsoft Remote Desktop 10.
- Go to the menu "Connections" and choose Import Desktops.
Import the downloaded .rdp-file storing information in the App Microsoft Remote desktop.
Next time you start Microsoft Remote Desktop 10 the desktop is saved.



- Choose "Edit" desktop, there you see the settings, choose "Folders"
, Press "+" and choose the folder that want to use on your local disk in your computer.
When you saved you can find this folder when connected to (logged in to) the Tesla-server.



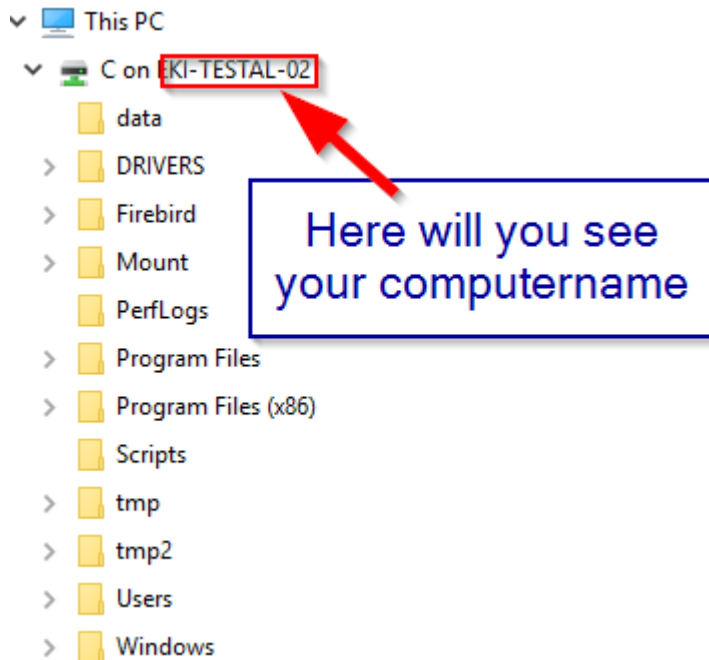
Windows

With a Windows-pc you can use you local disk from your laptop automatically.

It looks like this.

The computer-name in the picture is EKI-TESTAL-02, your computername will be seen there instead.

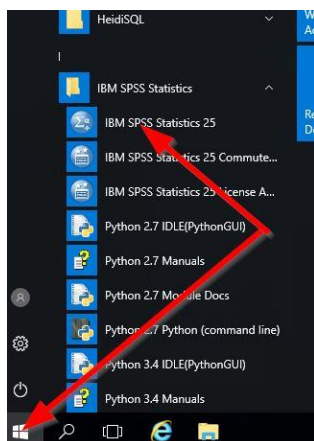
Save or open files from there.



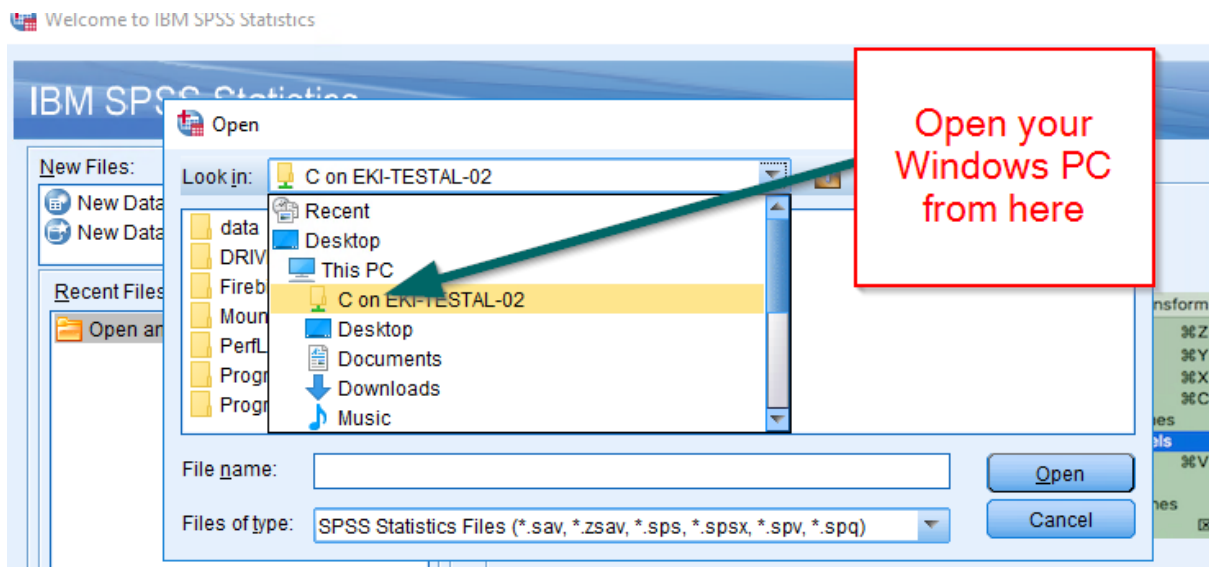
SPSS saving and opening files

When you want open and save files in SPSS do this:

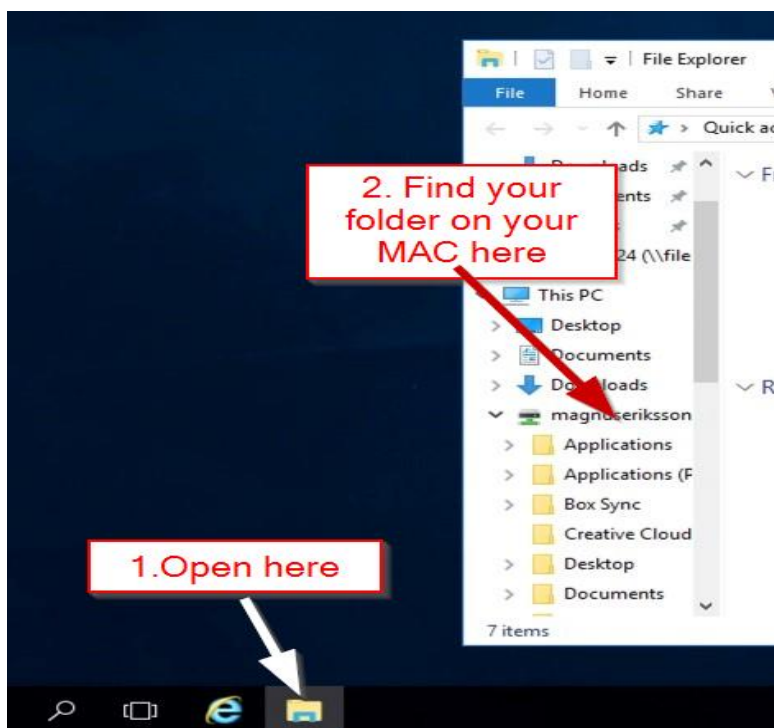
Start SPSS on Tesla-server



To open files in Windows

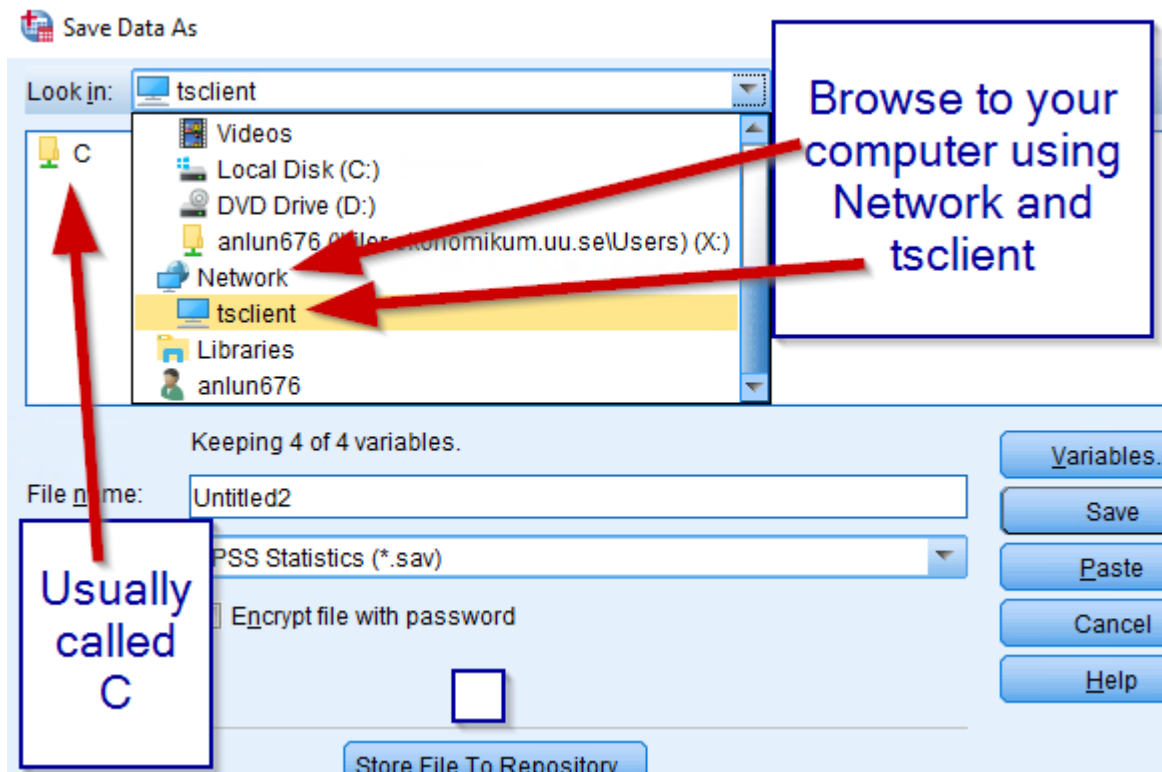


Open files on a MAC.

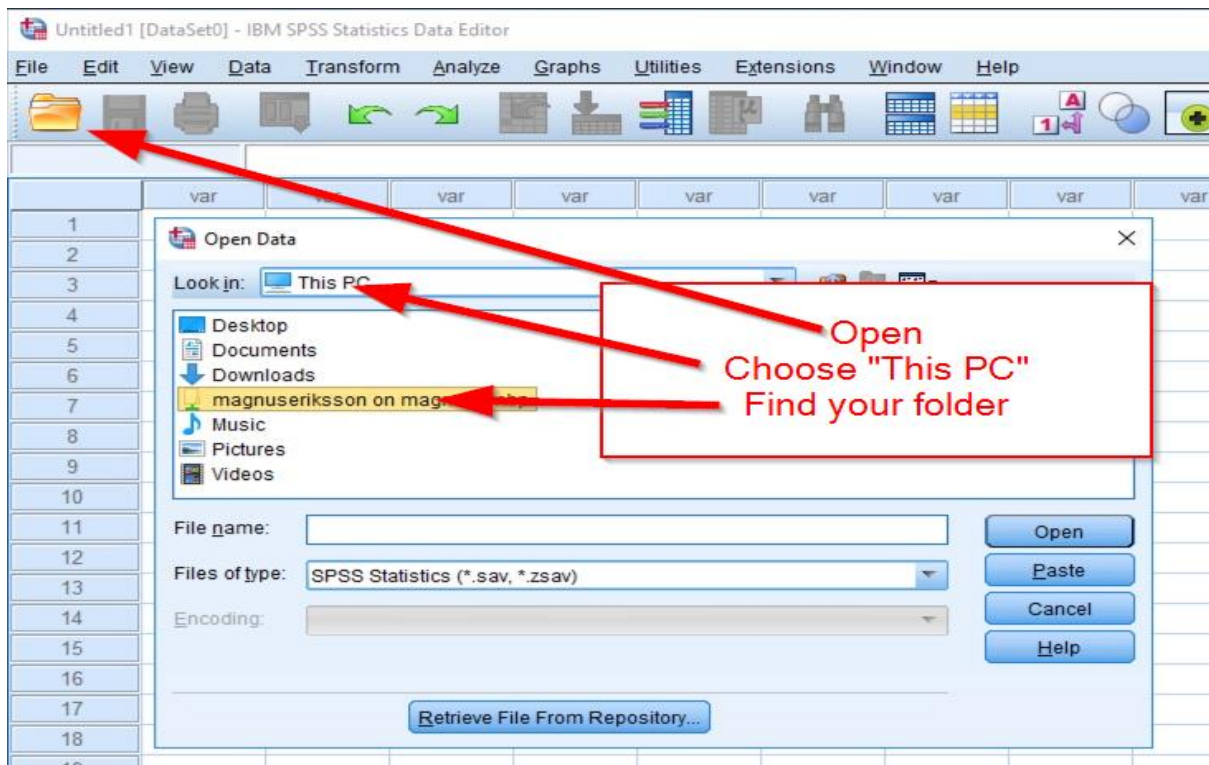


Save in SPSS on Tesla-server

Windows



On MAC



If any problems occur please contact It-support or possibly your teacher or supervisor.